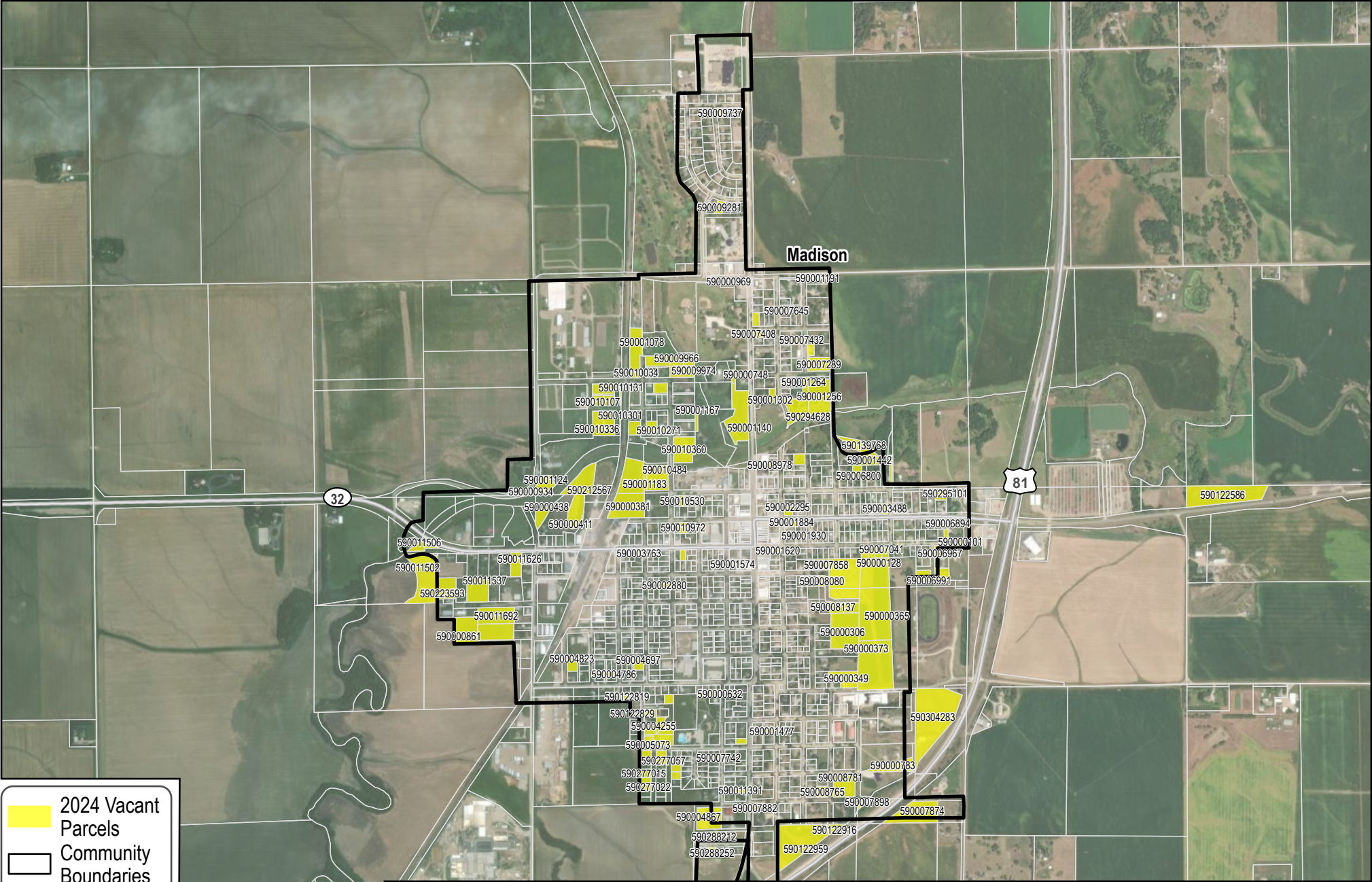


Madison, NE

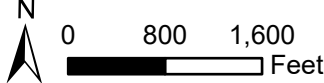
Northeast Region Housing Analysis



- 2024 Vacant Parcels
- Community Boundaries
- County Boundaries

Vacant Parcels
133

The 2024 Vacant Parcels include residential or commercial lots with a status of "unimproved."



The latest imagery available in the region was captured in 2024 and the earliest was captured in 2020.